

# Easy Prep.

Lighting System

# EasyPrep.

"EasyPrep." Fiber Optic Dental Light (Non-Sterile)

## • **Product Description**

The EasyPrep. Lighting System is intended for intraoral suction and illumination. When attached to the suction unit, EasyPrep. removes unwanted fluids in the patients mouth to create optimal isolation. Additionally, the EasyPrep. Lighting System includes an LED to light the intraoral field of view, significantly simplifying the complexity of hardware for safer clinical operations.

## **Contraindication**

The EasyPrep. Lighting System may cause discomfort and gag reflex for patient who are hypersensitive.

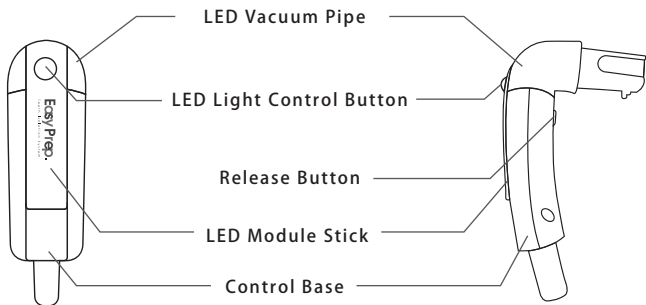
## **Side Effects**

The EasyPrep. Lighting System is not known to have any side effects.

## **Precautions**

01. This product is only for dental professionals.
02. Read the instruction manual before using this product.
03. Check accessories ( LED vacuum pipe, soft nylon brush, power adapter, micro USB cable ) before use. Do not use, if the accessories appears signs of aging, wrinkles or discoloration.
04. Stop using this product immediately if patient displays signs of discomfort.
05. Attach this product to the EasyPrep. Mouthpiece before use.
06. Do not use EasyPrep. Mouthpiece on patients with mandible fractures, osteoradionecrosis or facial bone fractures.
07. Follow the cleaning guidelines when sterilizing with an autoclave.
08. This product contains electronic components that may become damaged if dropped. Please use with care.
09. Select a suitable EasyPrep. Mouthpiece size for the patient.
10. Do not use this product if the EasyPrep. Mouthpiece cannot be fitted in the patient's mouth.
11. Do not autoclave the LED Module Stick.
12. The function of this product may be impaired if used close to a source of strong electromagnetic field ( such as mobile phones or radio installations ). Keep this device away from such sources to avoid electromagnetic interference.

## • Product Appearance



## • Operation Instruction

### 1) Assembly

#### Step 1:

Attach the Vacuum Pipe with the control base by connecting the hose connector.

#### Step 2:

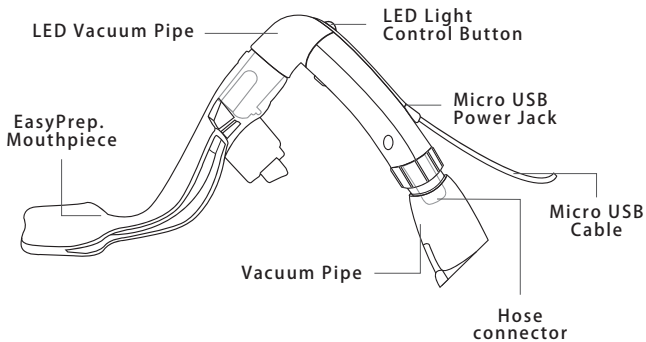
Attach the EasyPrep. Mouthpiece to the Vacuum Pipe. Check to make sure the two parts are correctly locked in place.

#### Step 3:

Plug the Power Adapter into an electrical outlet. Next, attach the micro USB cable to both the Power Adapter and the LED Module Stick.

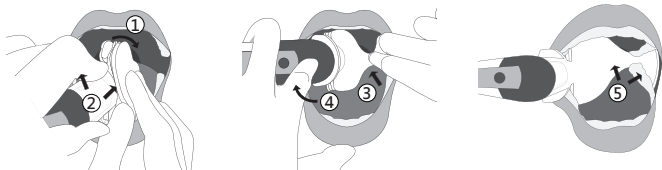
#### Step 4:

Press the LED Light Control Button for 1 sec to check the LED light.



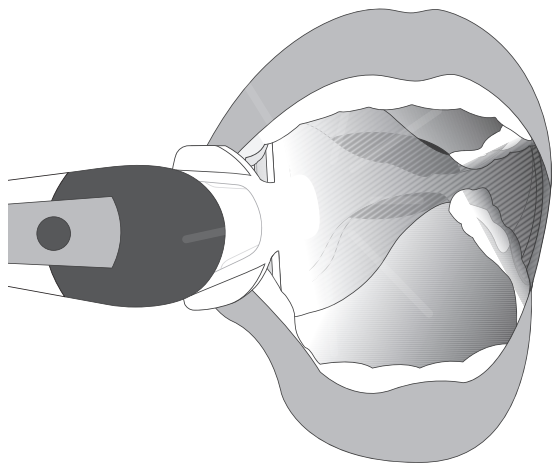
## 2) Use

Please read the instruction manual of EasyPrep. Mouthes before placing the product in the patient's oral cavity.



- ① Retract the wing of the EasyPrep. Mouthpiece.
- ② Gently slide the folded EasyPrep. Mouthpiece into the buccal vestibule of the oral cavity.
- ③ Move the pinched area of the rubber distal to the last tooth and unfold the wing.
- ④ Seat the bite block in the contralateral side.
- ⑤ Adjust the mouthpiece to completely isolate the field of treatment.

Turn on the LED Light and suction unit to begin dental treatment.



### 3) LED Light Adjustment

There are two brightness settings for the LED on the EasyPrep., and they can be alternated by pressing the control button. To turn off the LED light, press and hold the control button for 2 seconds.

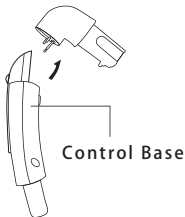
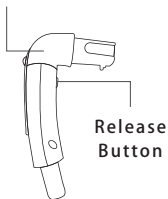
## 4) Disassembly for Cleaning and Sterilization

Cleaning and sterilization of the EasyPrep. Lighting System is recommended both before and after its clinical use. Before cleaning, please follow the following steps to disassembly the device.

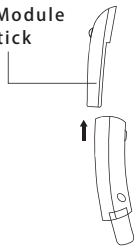
Step 1: Press the release button to detach the LED vacuum pipe from the control base.

Step 2: Remove the LED module stick from the control base. Twisting is not necessary.

LED Vacuum  
Pipe



LED Module  
Stick



### • Cleaning and Sterilization Guideline

#### 1). Cleaning and Sterilization of the Control Base

##### Cleaning Process:

After use, please immerse the Control Base in a medical cleaning agent to prevent organic substances such as blood and saliva. To perform manual cleaning, rinse and brush the control base with water. Continue applying medical cleaning agent until there are no visible contaminants.

To clean the pipe of the Control Base, please rinse it with water first, and then use the soft nylon brush included in the kit. Gently brush the inner tubes about with medical cleaning agent. (Do not use common cleaning detergents or ultrasonic cleaner).

After cleaning and drying, please put the Control Base into a sterile pouch and proceed with sterilization.

### **Sterilization Process:**

The Control Base can be sterilized by autoclave, please follow the settings described in Table 1.

## **2). Cleaning and Sterilization of the LED Vacuum Pipe**

### **Cleaning Process:**

After use, please immerse the LED Vacuum Pipe in a medical cleaning agent to prevent organic substances such as blood and saliva. To perform manual cleaning, rinse and brush the LED Vacuum Pipe with water. Continue applying medical cleaning agent until there are no visible contaminants

To clean the pipe of the LED Vacuum Pipe, please rinse it with water first, and then use the soft nylon brush included in the kit. Gently brush the inner tubes about with medical cleaning agent. (Do not use common cleaning detergents or ultrasonic cleaner).

After cleaning and drying, please put the LED Vacuum Pipe into a sterile pouch and proceed with sterilization.



## Sterilization Process:

The LED Vacuum Pipe can be sterilized by autoclave, please follow the settings described in Table 1.

<b>Autoclave Type</b>	<b>Temperature condition</b>	<b>Autoclave Time</b>	<b>Drying Time</b>
Gravity-Displacement	121°C / 250°F	30 minutes	30 minutes
Gravity-Displacement	132°C / 270°F	15 minutes	15 minutes
Vacuum Cycle	132°C / 270°F	4 minutes	20 minutes
Vacuum Cycle	134°C / 273°F	3 minutes	20 minutes

▲ Table 1: Autoclave settings

## 3). Cleaning of the LED Module Stick

### Cleaning Process:

Manual cleaning of the LED Module Stick is recommended. Begin by using wet cotton to gently wipe the surface of the LED Module Stick or using a nylon bristle brush to clean around the LED Module Stick surface. Do not press the LED Control Button and avoid the Micro USB jack while cleaning. If necessary, apply medical cleaning agent until there are no visible contaminants

After cleaning, dry off the LED Module Stick and Micro USB connector pins. Do not clean the LED Module Stick in the autoclave, chem-clay, ultrasonic cleaner, or any other submersive cleaning agent.

## Product Specification

**Product Name:** "EasyPrep." Fiber Optic Dental Light (Non-Sterile)

**Certificate / License Number:**

**Model:** MGF-D17007-01

**Dimensions:** 10.5 cm \* 5.5 cm \* 3.0 cm

**Weight:** about 40 g (Without accessories)

**Material:** Medical-grade Plastic, Aluminum alloy, Silicone, LED, Glass

**Storage / Transportation Conditions:** 10 °C to 40 °C (-50 °F to 104 °F), 30% to 90% RH

**Operation Condition:** 15 °C to 35 °C (59 °F to 95 °F), 30% to 90% RH

**Adapter:** UNIFIVE TECHNOLOGY CO L TD, Model No.: UMB305-0510  
(Input) 100V -240V AC  
(Output) 5V/1A DC

**Expected service life:** 3 years

**Accessories:** LED vacuum pipe, soft nylon brush, power adapter and micro USB cable. For purchasing information, please contact to your local retailer or distributor.

**Repair instructions:** the product must be returned to the manufacturer for repairing. Please contact to your local retailer or distributor, if you have repair demand.

## Standards

IEC 60601-1

IEC 60601-1-2

IEC 62471

**Sole agent:**

**Name of Company:** DKSH (Thailand) Limited

**Address:** 2106 Sukhumvit Road, Phrakhanong-Tai, Phrakhanong, Bangkok 10260, Thailand

**Tel:** +66 2 220 9943

**Email:**

**The principal:**

CEREC Asia Inc.

8F, No 356, Sec 1, Neihu Rd, Neihu Dist,

Taipei 11493,

Taiwan

**Manufacturer:**

Megaforce Company Limited 1F., No.5, Ziqiang St., Tucheng Dist., New Taipei City 23678, Taiwan

Made in Taiwan

**The Symbols displayed on the product  
and/or used in this manual**



Caution



TYPE B  
APPLIED PART



Operating  
instructions



Sterilized  
using steam  
or dry heat



Direct current



Non-sterile



manufacturer



Date of  
manufacture

